

Summary Statistics for TOR 2009 sites

Prisacani- Site 1

Patient frequency:

| | 3.28.2009 | 3.29.2009 | 3.30.2009 | Total |
|----------------------|------------------|------------------|------------------|--------------|
| Female- Adult | 12 | 41 | 11 | 64 |
| Male-Adult | 2 | 15 | 1 | 18 |
| Gender Unk. | 0 | 7 | 0 | 7 |
| Female-Peds | 0 | 1 | 0 | 1 |
| Male- Peds | 0 | 3 | 2 | 5 |
| Total | 14 | 67 | 14 | 95 |

Age:

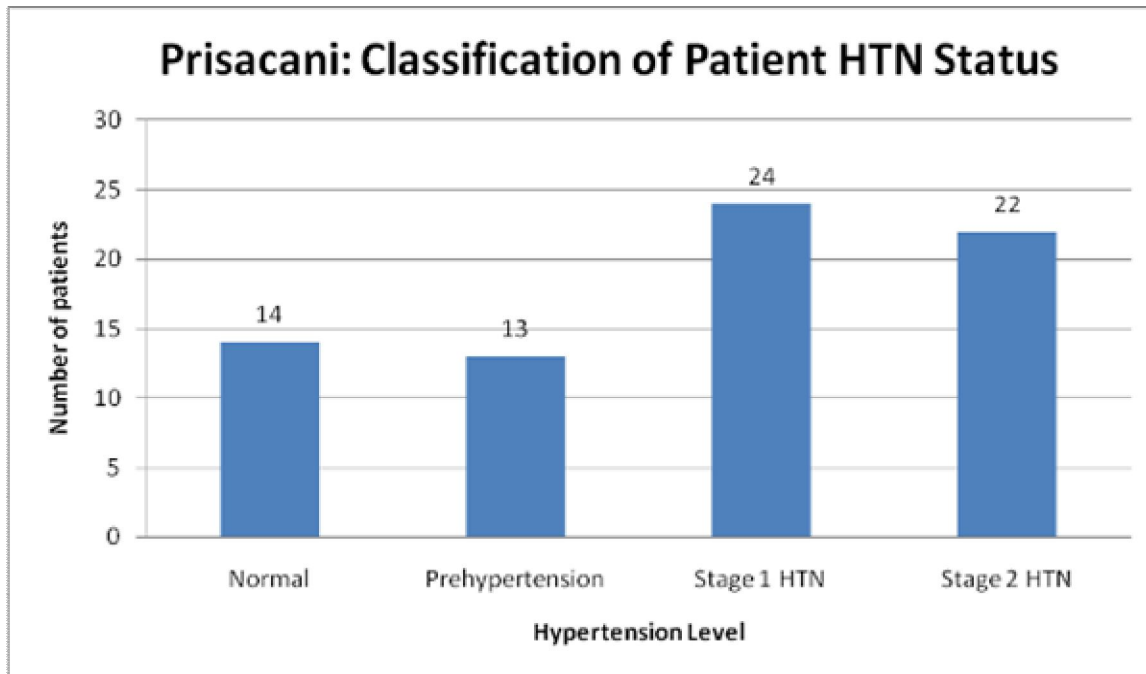
| | Adults and Pediatrics | Adults Only (≥ 18) |
|----------------|------------------------------|---------------------------|
| Minimum | 22 months | 25 |
| Maximum | 84 | 84 |
| Average | 63.9* | 68.22* |

*this number calculated by removing 7 from the denominator due to unknown ages of 7 documented patients

Hypertension status:

Levels for hypertension status were found by matching the patient's recorded blood pressure to the levels defined by the NIH's National Heart, Lung, and Blood Institute for people 18 years or older.

| BP N/A | Normal | Prehypertension | Stage 1 | Stage 2 |
|---------------|---------------|------------------------|----------------|----------------|
| 22 | 14 | 13 | 24 | 22 |



Systolic blood pressure measurements:

| | |
|---------|---------|
| Minimum | 90 |
| Maximum | 200 |
| Median | 145 |
| Average | 176.027 |
| Mode | 150 |

Diastolic blood pressure measurements:

| | |
|---------|-------|
| Minimum | 60 |
| Maximum | 130 |
| Median | 82.5 |
| Average | 85.49 |
| Mode | 80 |

Other Frequencies:

Diagnoses

Most commonly reported diagnoses were HTN, arthritis, and UTI.

Complaints

The most commonly reported complaints were pain, either abdominal or joint/musculoskeletal.

Pap smears

A total of 9 pap smears were recorded as being completed at site 1.

Macaresti- Site 2

Patient frequency:

| | 3.28.2009 | 3.29.2009 | 3.30.2009 | Total |
|----------------------|------------------|------------------|------------------|--------------|
| Female- Adult | 0 | 6 | 0 | 6 |
| Male-Adult | 0 | 6 | 0 | 6 |
| Gender Unk. | 7 | 0 | 0 | 7 |
| Female-Peds | 0 | 6 | 0 | 6 |
| Male- Peds | 0 | 3 | 0 | 3 |
| Total | 7 | 21 | 0 | 28 |

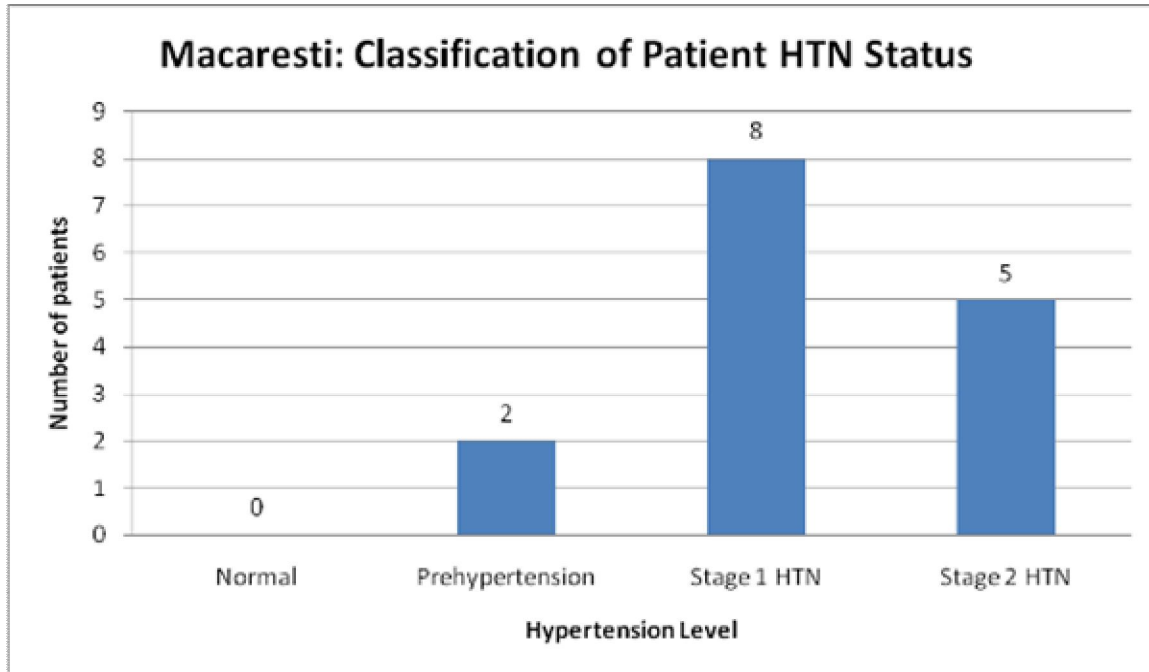
Age:

| | Adults and Pediatrics | Adults Only (≥ 18) |
|----------------|------------------------------|---------------------------|
| Minimum | 6 | 32 |
| Maximum | 78 | 78 |
| Average | 38.5 | 49.3 |

Hypertension status:

Levels for hypertension status were found by matching the patient's recorded blood pressure to the levels defined by the NIH's National Heart, Lung, and Blood Institute for people 18 years or older.

| BP N/A | Normal | Prehypertension | Stage 1 | Stage 2 |
|---------------|---------------|------------------------|----------------|----------------|
| 7 | 0 | 2 | 8 | 5 |



*The blood pressure measurements of patients under the age of 18 were not classified into the above categories which accounts for a total of four pediatric patients.

Systolic blood pressure measurements:

| | |
|---------|-----|
| Minimum | 90 |
| Maximum | 195 |
| Median | 150 |
| Average | 152 |
| Mode | 150 |

Diastolic blood pressure measurements:

| | |
|---------|-------|
| Minimum | 60 |
| Maximum | 105 |
| Median | 90 |
| Average | 84.67 |
| Mode | 90 |

Other Frequencies:

Diagnoses

Most commonly reported diagnoses were HTN and arthritis.

Complaints

The most commonly reported complaints were joint/musculoskeletal pain, headaches, and problems with vision.

Pap smears

No pap smears were recorded as being completed for site 2.

Comarna- Site 3

Patient frequency:

| | 3.28.2009 | 3.29.2009 | 3.30.2009 | Total |
|----------------------|------------------|------------------|------------------|--------------|
| Female- Adult | 6 | 31 | 7 | 44 |
| Male-Adult | 0 | 11 | 8 | 19 |
| Gender Unk. | 0 | 0 | 0 | 0 |
| Female-Peds | 0 | 8 | 2 | 10 |
| Male- Peds | 0 | 4 | 0 | 4 |
| Total | 6 | 54 | 17 | 77 |

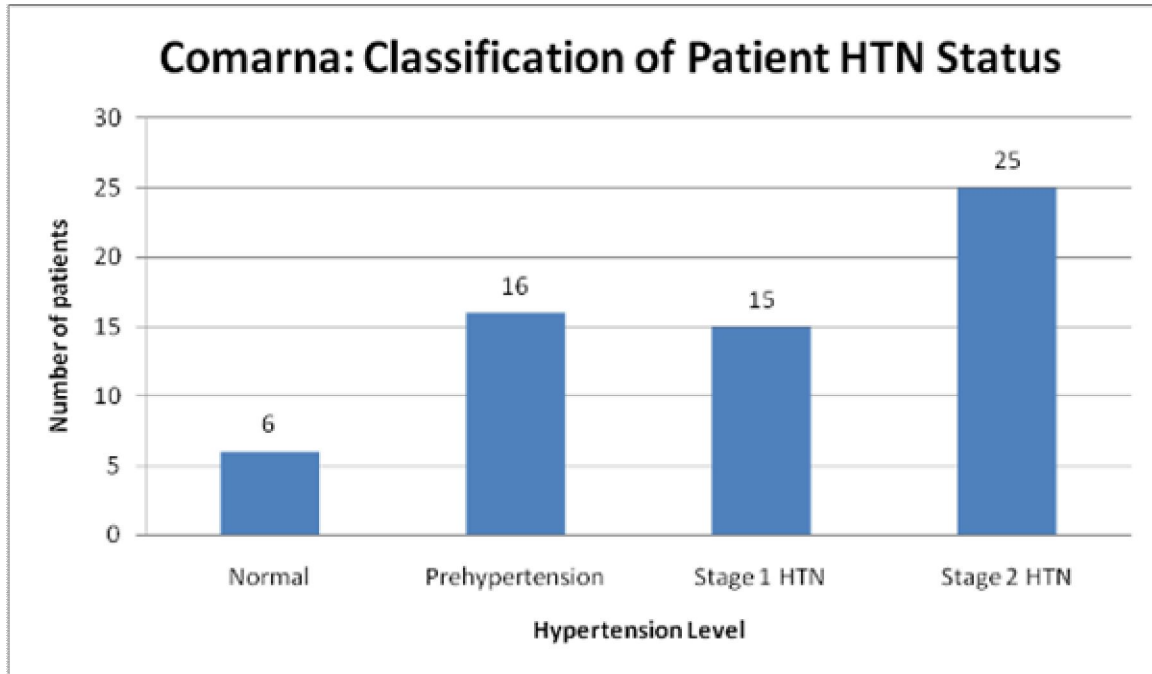
Age:

| | Adults and Pediatrics | Adults Only (≥ 18) |
|----------------|------------------------------|---------------------------|
| Minimum | 7 months | 25 |
| Maximum | 86 | 86 |
| Average | 51 | 60.9 |

Hypertension status:

Levels for hypertension status were found by matching the patient's recorded blood pressure to the levels defined by the NIH's National Heart, Lung, and Blood Institute for people 18 years or older.

| BP N/A | Normal | Prehypertension | Stage 1 | Stage 2 |
|---------------|---------------|------------------------|----------------|----------------|
| 5 | 6 | 16 | 15 | 25 |



Systolic blood pressure measurements:

| | |
|---------|--------|
| Minimum | 100 |
| Maximum | 215 |
| Median | 140 |
| Average | 144.84 |
| Mode | 140 |

Diastolic blood pressure measurements:

| | |
|---------|-------|
| Minimum | 60 |
| Maximum | 120 |
| Median | 82 |
| Average | 84.95 |
| Mode | 80 |

Weight/Height/BMI measurements:

The following measurements include patients 18 years old or older and the BMI was calculated using weight in kilograms divided by the squared measurement of height in meters.

| | Height (m) | Weight (kg) | BMI |
|---------|------------|-------------|------|
| Minimum | 1.4 | 48 | 19.5 |
| Maximum | 1.7 | 101 | 37 |
| Average | 1.58 | 67.4 | 26.9 |

Other Frequencies:

Diagnoses

Most commonly reported diagnoses were HTN, arthritis, UTI, and pinworms. Most of the pediatric visits were well child checks.

Complaints

The most commonly reported complaints were pain, either abdominal or joint/musculoskeletal.

Pap smears

A total of 12 pap smears were recorded as being conducted at site 3.

Totals for All Three Sites Combined

Patient frequency:

| | 3.28.2009 | 3.29.2009 | 3.30.2009 | Total |
|---------------|-----------|------------|-----------|------------|
| Female- Adult | 18 | 78 | 18 | 114 |
| Male-Adult | 2 | 32 | 9 | 43 |
| Gender Unk. | 7 | 7 | 0 | 14 |
| Female-Peds | 0 | 15 | 2 | 17 |
| Male- Peds | 0 | 10 | 2 | 12 |
| Total | 27 | 142 | 31 | 200 |

Female (adult) patients for all 3 sites= $114/200= 57\%$

Male (adult) patients for all 3 sites= 43%

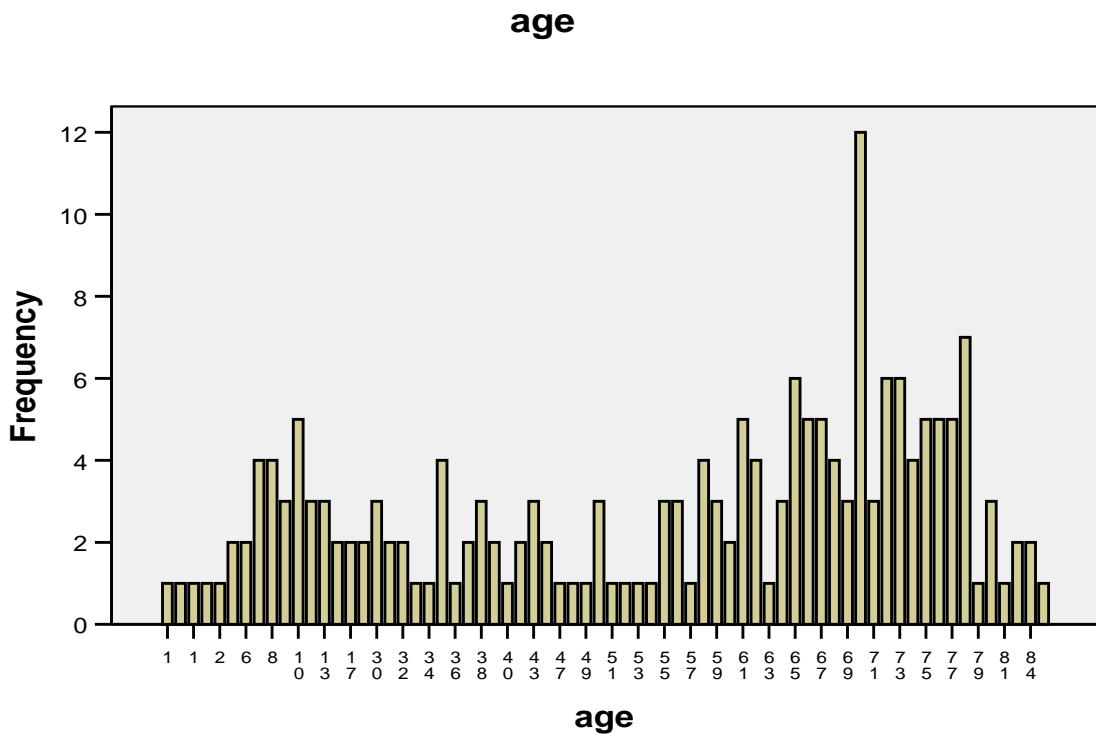
Adult patients for all 3 sites= 78.5%

Pediatric patients for all 3 sites= 14.5%

Age:

| | Adults and Pediatrics | Adults Only (≥ 18) |
|----------------|------------------------------|---------------------------|
| Minimum | 7 months | 25 |
| Maximum | 86 | 86 |
| Average | 51.13 | 59.47 |

Age distribution for all 3 sites:



Hypertension status:

Levels for hypertension status were found matching recorded patient blood pressure to the levels defined by the NIH's National Heart, Lung, and Blood Institute for people 18 years or older.

| BP N/A | Normal | Prehypertension | Stage 1 | Stage 2 |
|---------------|---------------|------------------------|----------------|----------------|
| 34 | 20 | 31 | 47 | 52 |

